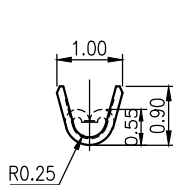
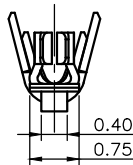
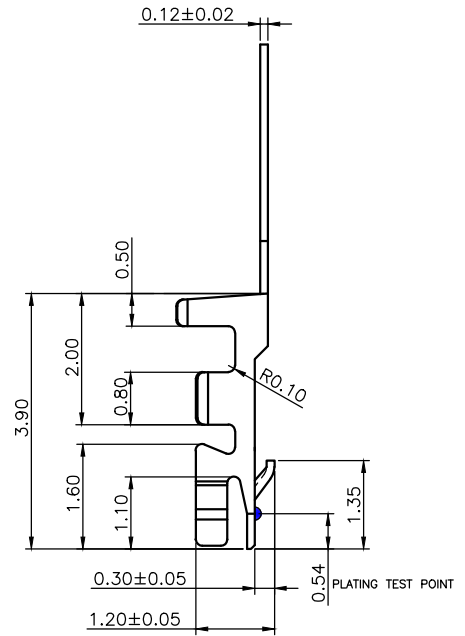
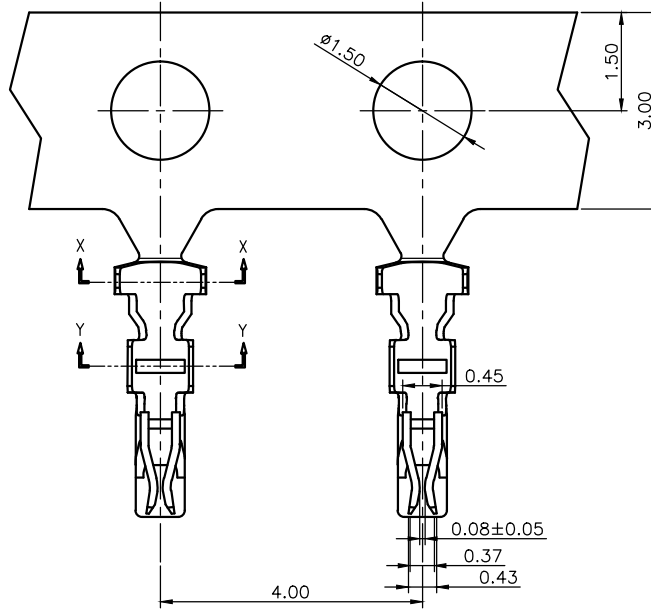
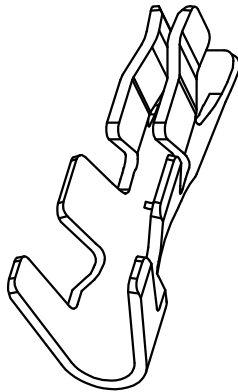




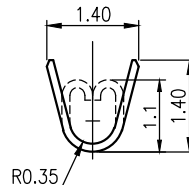
NOTES:

1. MATERIAL:PHOSPHOR BRONZE,THICKNESS 0.12±0.02
2. PLATING:
 - 2.1 20u" MAX NICKEL UNDER PLATING OVERALL
L:100u"MIN PURE TIN PLATING ON CONTACT
 - 2.2 50u" MIN NICKEL UNDER PLATING OVERALL
1:GOLD FLASH ON CONTACT
C:15u" GOLD PLANTING ON CONTACT
D:30u" GOLD PLANTING ON CONTACT
3. WIRE RANGE:SUITABLE FOR AWG#28~#32
4. SPEC. PLS. REFER TO PS-50429-XXXX-XXX
5. PART NUMBER

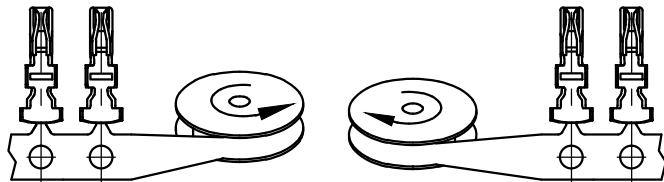
50430-T X X X
 TYPE ——— X X X
 O: NONE
 PLATING
 L:PURE TIN
 1:GOLD FLASH
 C:15u" GOLD PLANTING ON CONTACT
 D:30u" GOLD PLANTING ON CONTACT
 MATERIAL
 1:PHOSPHOR BRONZE C5191



SECTION Y-Y



SECTION X-X



WIND OPERATION AFTER STAMPING AND BEFORE PLATING

WIND OPERATION AFTER PLATING AND BEFORE ASSEMBLY

QUALITY SYMBOLS MAJOR CRITICAL GENERAL TOLERANCES (UNLESS SPECIFIED) .X ±0.5 .X ±0.25 .XX ±0.15 .XXX ±0.1 ANGLES ±2°	DRAWN BY YanJinXiu	DATE 22/05/03	
	CHECKED BY BRAVE	DATE 22/05/03	
	APPROVED BY BRAVE	DATE 22/05/03	SIZE A4
	UNITS mm		DWG NO. 50430-TXXX
	SCALE 10:1	SHEET NO. 1 OF 1	REV G
			PART NO. SEE NOTES